

ECP WORLD HEADQUARTERS

15612 South Keeler Terrace

Olathe, KS 66062



The **GLOBE**

ECP MAGAZINE



Issue 1, February 2021. Copyright of Earth Contact Products | getecp.com

Brett Frey assists KC PRO installing 85 new construction helicals before foundation walls are poured! Case Study will be available shortly!

CALENDAR OF EVENTS

The GLOBE

- 1** March 1st-3rd - Helical Training-
Courtyard Marriott Olathe, KS
- 2** March 4th -5th - Rhino Carbon Fiber-
Courtyard Marriott Olathe, KS
- 3** March 12th at 3 pm & March 19th at 8 am
- 2 Webinars with Pro Series Pumps.
- 4** March 30th - April 1st - PolyPier -
Courtyard Marriott Olathe, KS
- 5** April 13th- April 15 - Steel Pier School-
Courtyard Marriott Olathe, KS
- 6** Owners Only Meeting - TBA



DID YOU KNOW?

#1) Did you know ECP offers waterproofing and PolyPier products to expand your line of services to customers?

#2) Just In case you haven't heard ECP has new products approved by the ICC-ES- View the reports here:
<https://www.earthcontactproducts.com/icc-es-evaluation-report/>

Want more information on either topic?
Please contact us at 913.393.0007



ECP NATION LATEST NEWS



WELCOME TO THE TEAM

Nick Salpas- Nick has been with us for nearly two years and was recently promoted from Shipping to help with POLYPIER and CIVIL training locally and nationwide. If you need to reach Nick, please feel free to email him at nicks@getecp.com.

WORLD OF CONCRETE

World of Concrete 2021 Announces New Show Dates: June 8-10, 2021; Education June 7-10. World of Concrete has made the proactive decision to reschedule the show in 2021 from January to June. It will still be held at the Las Vegas Convention Center.

THE ECP PORTAL

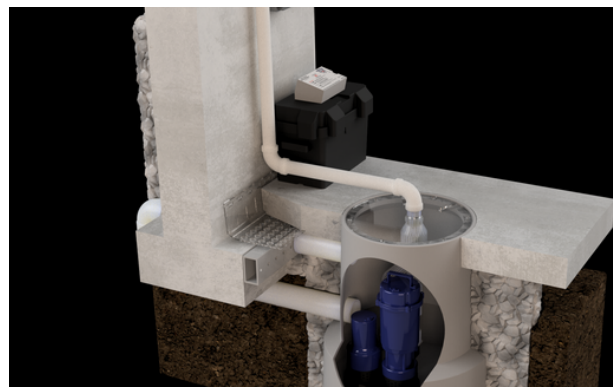
The ECP Portal includes ECP brochures, videos, images, the approved vendor list and more. This is exclusively for our ECP Contractors.

Make sure to get your login for the ECP Portal (www.ecpportal.com). Email marketing@getecp.com to learn more.

GETECP.COM

NEW 3-D MODELS

New ECP 3-D Models are available. Please contact marketing@getecp.com for more information or visit the ECPPORTAL.com to see images and pricing!



MORE NEWS (BIG NEWS!)



NOW AVAILABLE: HEARTH

Financing Tools for your team - this is huge! HEARTH is now available through ECP. HEARTH is a complete financing toolkit specifically for home improvement and contractors. You can read about what's available online by [CLICKING HERE](#) or email marketing@getecp.com or with any questions.

NOW AVAILABLE: TECH MANUAL

We are excited to announce the release of our **10th Edition of the ECP TECH Manual**. It is now available from our team at ECP. To get your copy of the manual you can click this link or head online to www.getecp.com/techmanual

We will be shipping one to you as well so be on the lookout.



TRAINING & CONTINUED EDUCATIONAL CLASSES

TRAINING SIGN-UP

ECP has three major training events throughout the year. If additional training opportunities are added you will find information about those events here.

PolyPier concrete leveling and lifting training at ECP:

- Steel Pier School
- Helical Training
- PolyPier Training

Check back to this page for details on upcoming training and to sign up using the signup form below. The goal at ECP is to provide you with all the information and tools you need to use our products successfully - for you and for your customers. Your success is our success.

To sign up for training visit:

<https://www.getecp.com/training-sign-up/> For any questions email marketing@getecp.com.



"Our goal is to provide hands-on, best-in-class training for our contractors!"

-Aaron Grayham - World Wide Sales Director, Team ECP

CASE STUDY

February Feature: 2020 Project of the Year - Dalinghaus Construction



Solar Power Substation Lifted and Supported by 186 ECP Steel Resistance™ Piers Central, California



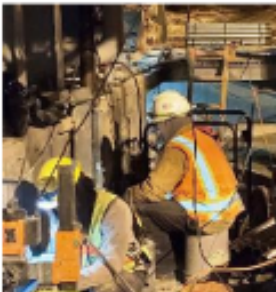
This part of the substation is where a huge transformer and wiring framework settled and needed underpinning.

This solar power substation in Central California was damaged by an earthquake at the beginning of 2020. The earthquake caused settlement of transformers and other structures within the substation. Some foundations dropped as much as six inches. The movements at column foundations caused misalignment of the framing for the electrical distribution structures. This distress had the owner considering suspending plant operations because the framing misalignments were causing serious stress to the high voltage cables.



Technicians are preparing the transformer footing for bracket installation.

The massive transformer seen above needed to be lifted and restored to the original elevation. The special foundation for the huge transformer was designed to contain transformer oil leakage. If the transformer leaked, oil would be held within a four foot deep well surrounding the transformer pad. The load of the transformer needed to be supported with piers adjacent to the transformer pad. Additionally, underpinning was required at the outer perimeter of the oil containment foundation.



Workers are installing wall mount pier brackets on the transformer footing.

Some of the project's towers were constructed on thirty foot deep concrete caissons. This project required raising a number of these large concrete caissons. The design required surface mounted curved brackets on opposite sides of each caisson. The dual pile system allowed lifting of the tower foundations back into place. This corrected the misalignments and stress on the electrical cables. ECP had experience designing and producing a similar concave surface mount plate bracket that was installed on round concrete caissons in New England in 2009. Producing a similar bracket design for this application was not difficult.



Hydraulic jacks are used to lift the transformer and footing.

The design and specifications were prepared by Waypoint Engineering of Vancouver, Washington 98660. The design called for ECP PPB-350 WM Flat Wall Mounted Brackets along with ECP PPB-350 WM Curved Wall Mounted Brackets. The 124 placements used 3-1/2 inch diameter tubular pier pipe. In addition, 62 ECP PPB-300 Eccentric Underpinning Brackets were installed to lift and level the building structures. The PPB-300 ECP Steel Pier™ System mounts under the footing and uses a three inch diameter tubular pier pipe. The average installed depth was 35 feet below grade.



The special concave column mounted bracket is shown.

All piers were proof load tested before being loaded. Once an entire structure was underpinned and tested, hydraulic jacks at each pier gently and carefully recovered lost elevation and restored the structure to specifications.



This is a view of a completed pier installation on a caisson.



Earth Contact Products, LLC
"Designed and Engineered to
Perform"

Because electric generation is produced during sunlight hours, the restoration work had to be completed at night and the work took two months to complete.

HELICAL TRAINING ITINERARY

Helical Training March 1-3, 2021

Contacts: Aaron K. Grayham 913-207-0087 - Brett Frey 913-268-2205 - Sam Rathbun 816-217-4962 Nick Salpas 913-299-7871

**Hotel Location: Courtyard Kansas City Olathe, 12151
South Strang Line Court, Olathe, KS 66062**

Monday, March 1st

- 1:00 p.m. - 1:30 p.m.: Introductions / Course Overview
- 1:30 p.m. - 3:00 p.m.: Helical History/ Configurations/ Flight Options/ Shaft Size
- 3:00 p.m. - 3:15 p.m.: Break
- 3:15 p.m. - 6:00 p.m.: Determining Helical Design and Torque, Soil Borings Explanation and Meaning, Calculating Loads (Classroom Participation)
- 7:00 p.m. - 9:00 p.m. Dinner (Transportation will depart at 6:45)

Tuesday, March 2nd

- 8:30 a.m. - 9:00 a.m.: Breakfast
- 9:00 a.m. - 10:00 a.m.: ECP's Product Applications and Required Equipment
- 10:00 a.m. - 10:30 a.m.: Growing Your Business with ECP and our Partner Network
- 10:30 a.m.- 12:00 p.m.: Job Site Visits
- 12:00 p.m. - 1:00 p.m.: Lunch
- 1:00 p.m. - 3:00 p.m.: Mechanical Strength and Empirical Factor of Steel
- 3:00 p.m. - 3:15 p.m.: Break
- 3:15 p.m. - 6:15 p.m.: Importance between Working Hot Loads vs Ultimate Loads
- 7:00 p.m.- 9:00 p.m.: Dinner (Transportation will depart at 6:45)

Wednesday, March 3rd

- 8:00 a.m. - 8:30 a.m.: Breakfast
- 8:30 a.m. - 10:00 a.m.: Classroom Interaction (Questions)
- 10:00 a.m. - 11:30 a.m.: ECP's Shop Tour (Transportation will depart at 10:00 a.m.)
*Meet the ECP Team (learn who you will be working with)
- 12:00 p.m.- 12:30 p.m.: Lunch
- 12:30 p.m. - 1:00 p.m.: Common Problems/ Resolution
- 1:00 p.m. - 2:00 p.m.: Calculations Review
- 2:00 p.m.- 2:30 p.m.: Break/Final questions for test
- 2:30 p.m. - 4:00 p.m.: Test and Results

Itinerary Will Change

If available we will have Jobsite visits. We will see projects in different phases. This Itinerary will change based upon Partner residential projects.

- ECP Family of Partners
- ECP Waterproofing
- PolyPier
- ECP LINQ
- Websites To Impress