

The **Strongest** System on the Market.

Patented Rhino® Carbon Fiber Wall Supports link the foundation base with the house framing making it the strongest system on the market! Here is an excerpt from a recent article titled "Working With Carbon Fiber."

"...Far stronger and less bulky than steel, carbon fiber is transforming a broad range of industries, and waterproofing is one of them... Rhino Carbon Fiber Wall Supports goes a step further. The Rhino system provides continuous carbon fiber strength from the foundation all the way up to the house framing. Rhino is fastened above the sill plate with a galvanized bracket and secured to the footing with a massive carbon fiber stake."

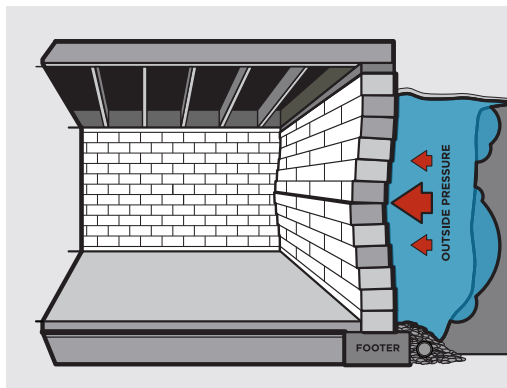
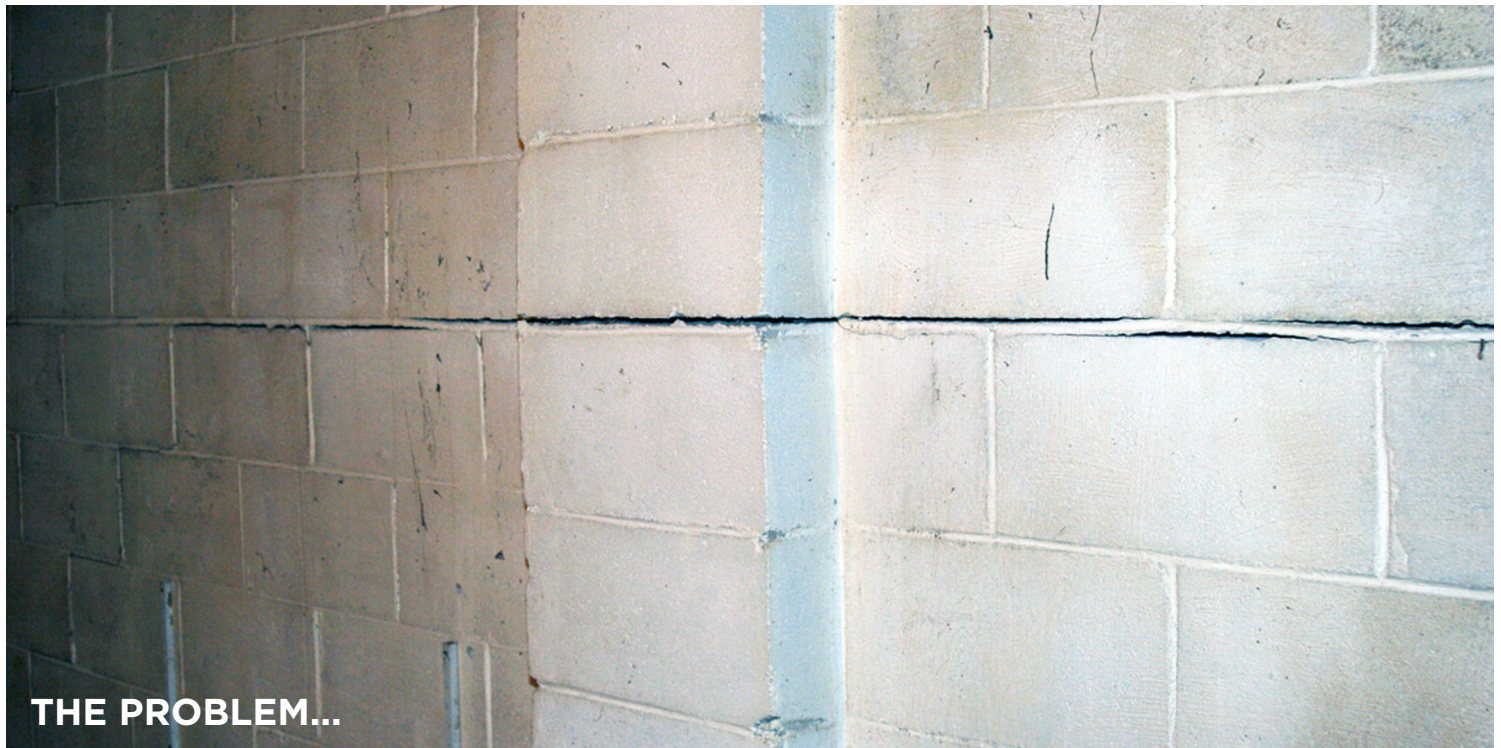
Excerpt taken from Waterproof Magazine Fall 2010 issue.

Visit us online today and enter to win a **FREE Rhino Wall Repair Kit!**



www.RhinoCarbonFiber.com

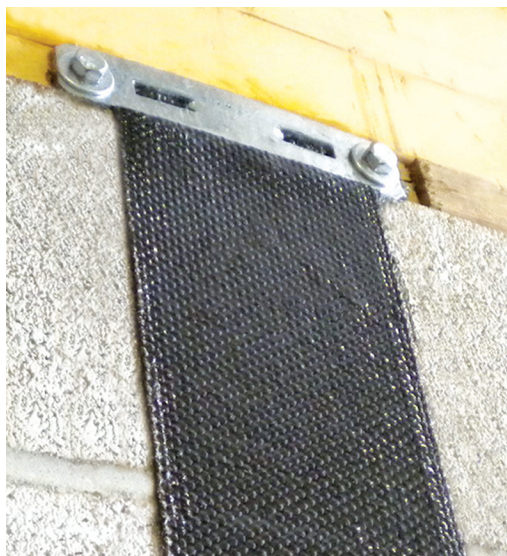
© 2010 Rhino® Carbon Fiber Wall Supports All Rights Reserved



Bowed Walls are caused by soil load and under designed foundations. Outside pressure is directed towards the middle of the foundation wall. In order to correct this the wall needs added support so the outside pressure is dispersed throughout the entire wall.

Systems such as Wall Tie Backs, Beams (Stationary / Power) and Dig & Push do not straighten the bowed walls and will ultimately break and crush the concrete block. Carbon fiber systems such as Sheets, Plates & Kevlar Weaves* do not secure to the sill plate or floor where the major problem areas occur. Due to the lack of support the outside ground pressure shifts to the top and bottom of the foundation wall. This force ultimately causes damage resulting in more repair work needed.

**Kevlar Weave system does secure to the sill plate, but movement still occurs resulting in damage. This system does NOT secure to the floor.*



THE SOLUTION...

Patented Rhino® Carbon Fiber Wall Supports link the foundation base with the house framing making it the strongest system on the market!

The carbon fiber is fastened to the sill plate with a galvanized bracket and secured to the foundation floor with a carbon fiber pin. Deterioration does not occur because the carbon fiber system is secured to the foundation wall allowing for an even distribution of outside pressure.

Advantages Include:

- Strongest wall repair system available
- No deterioration or movement
- Minimal intrusiveness
- Fast, clean installation
- Works on block and poured concrete foundations
- Painted to help prevent the aesthetic problem with potential home buyers
- Kits available for 8/9/10 foot foundation walls
- Corner repair and individual components also available

Visit us online today and enter to win a **FREE** Rhino Wall Repair Kit!