

The ECP Steel Pier

The ECP PPB-350-EP2 eccentric steel piercing system was among the first in a long line of eccentric steel pier systems by Earth Contact Products. The 2" offset allows the piercing system to clear obstacles against the foundation walls. The design and engineering placed in this push pier technology is second to none. The PPB-350-EP2 steel pier design penetrates the soil deeply, beyond expansive or active soils, to support structures from either the interior or exterior of the foundation without impeding installation. ECP, the leaders in steel piercing technologies, is known for the strongest and deepest driving pier systems available.

Designed and Engineered to Perform!

The ECP PPB-350-EP2 steel pier provides a two-stage system of driving steel pilings to a verified bearing stratum. Upon reaching this load bearing soil our unique hydraulic manifold lifting system can then recover lost elevation or provide a precise stabilization of structures. Earth Contact Products PPB-350-EP2 was designed to provide the strongest support for your foundation.

Quiet, vibration free, equipment is used to install ECP steel piers. The equipment is portable for easy access in hard to reach areas such as basements and low overhead access areas. Installation is all below ground and is then backfilled so upon completion there will be no visible signs that a repair was performed. If you need your structure repaired due to settlement, the ECP PPB-350-EP2 will give your foundation a lifetime of support.

Designed to be the strongest foundation structural support in the industry

- Made of galvanized steel pier material
- 2" offset
- Individual and verifiable capacities
- The industry standard in support
- Installs with portable hydraulic equipment
- Designed by engineers

The Engineer's Choice in Quality
Structural Repair Underpinning.

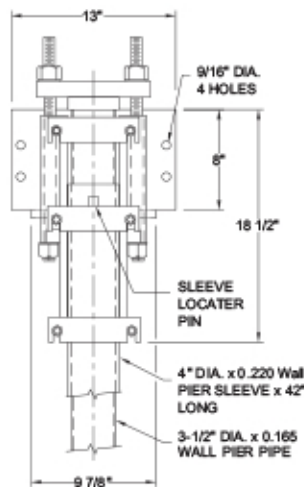
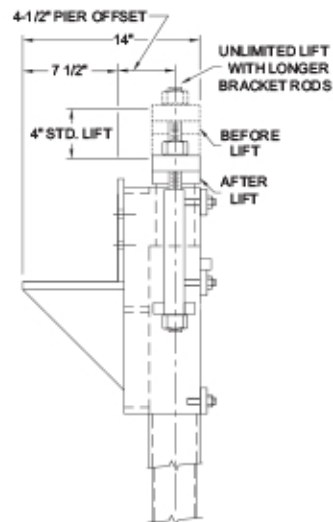


**EARTH
CONTACT
PRODUCTS**

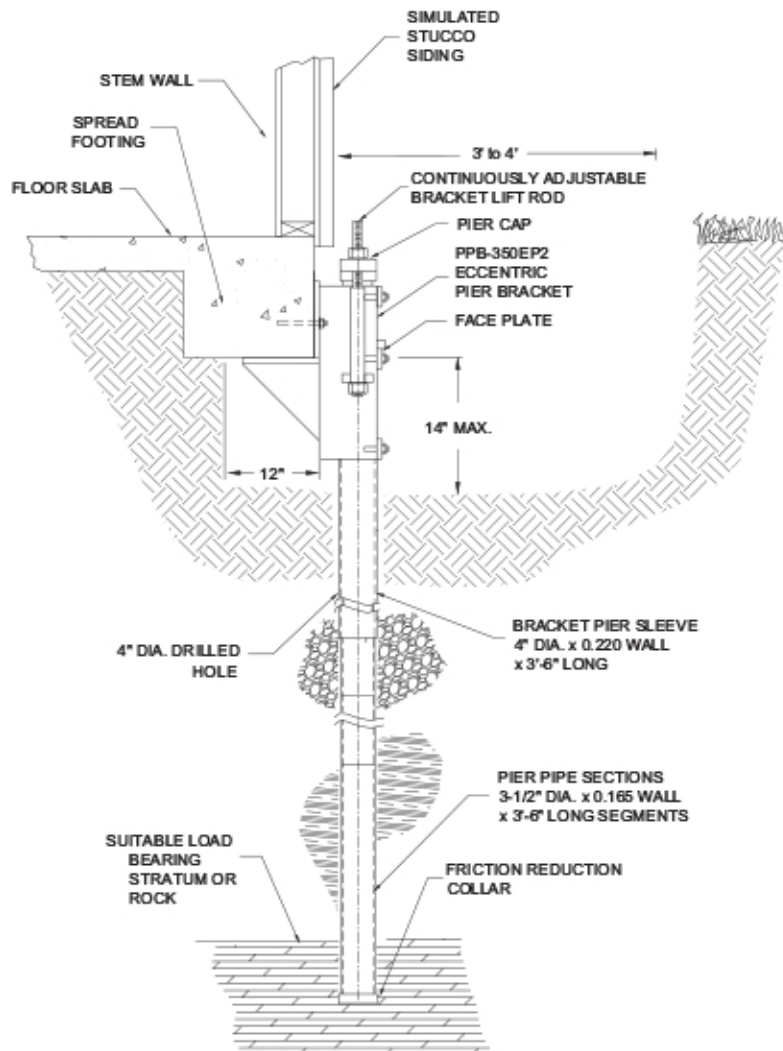
1-866-327-0007

15612 S Keeler Terr.
Olathe, KS 66062
Phone: 913-393-0007
Fax: 913-393-0008
info@getecp.com
www.getecp.com

ECP Steel Pier™ - PPB-350EP2 Pier System



PPB-350EP2 - 2" Eccentric Utility Bracket Details



PPB-350EP2 - 2" Eccentric Utility Bracket Application Drawing

- Ultimate Capacity – 53,000 lb
- 2" offset
- Fully Adjustable Unlimited Lift Capability
- Installs from Outside or Inside Structure
- 3-1/2" Diameter High Strength, Galvanized Tubular Pier
- Installs to Rock or Verified Load Bearing Stratum
- 100% of Piers Field Load Tested During Installation



**EARTH
CONTACT
PRODUCTS**

1-866-327-0007

15612 S Keeler Terr.
Olathe, KS 66062
Phone: 913-393-0007
Fax: 913-393-0008
info@getecp.com
www.getecp.com