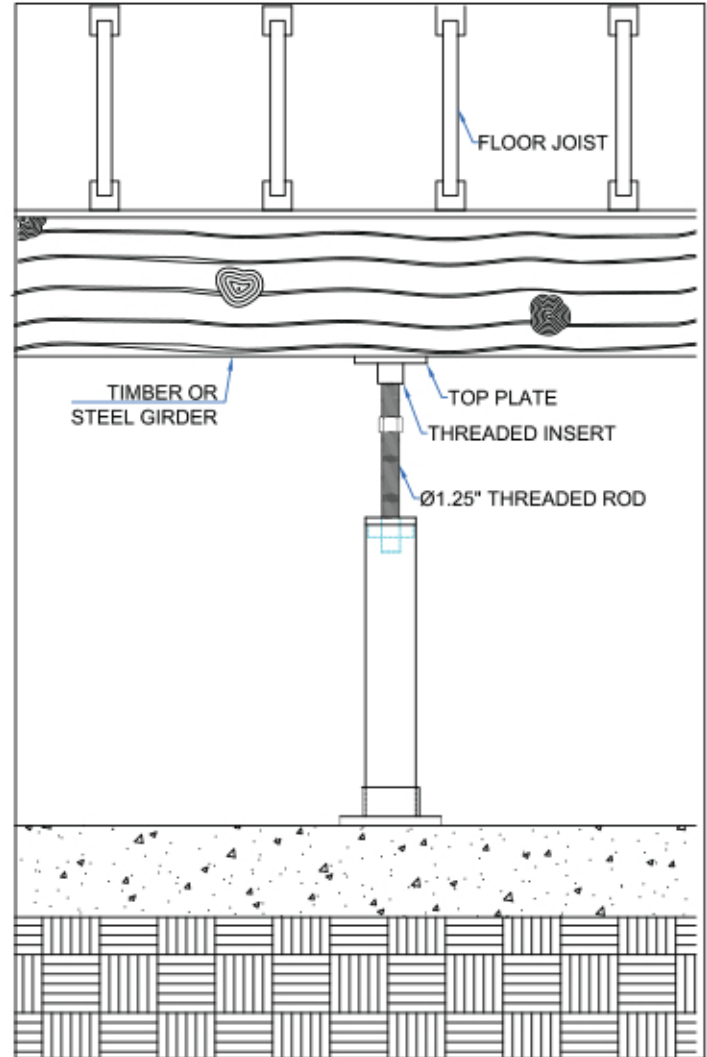
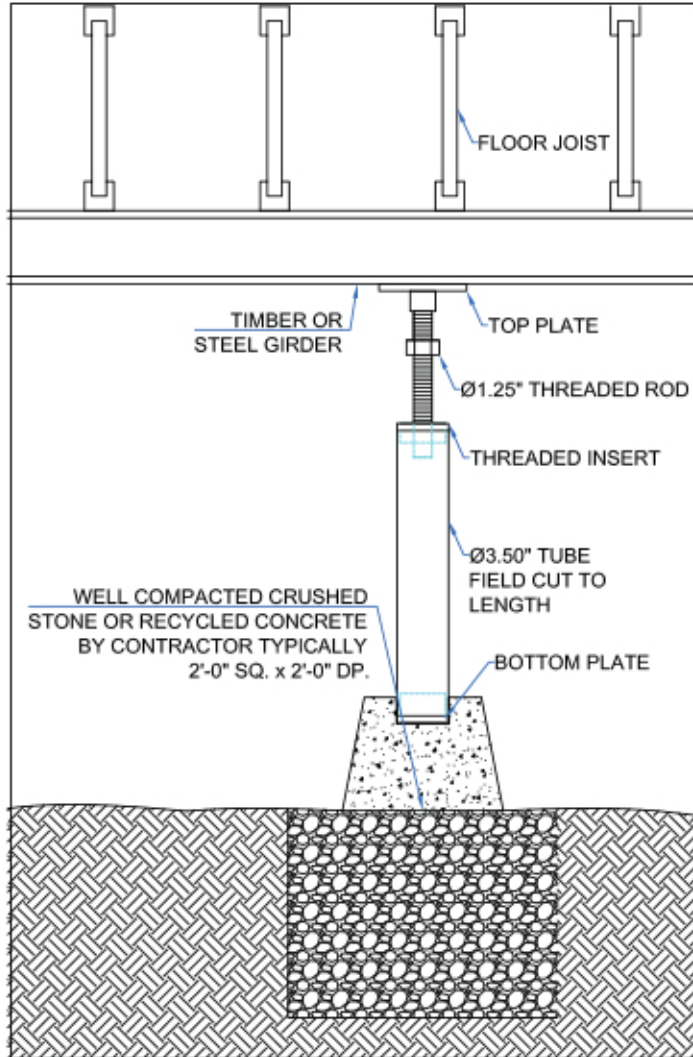




ECP Crawlspace Support Jacks

ECP's PPB-103 and PPB-107 crawlspace support jacks are designed to provide positive support to sagging floors above crawlspaces and to help remove the bouncing or squeaking caused by inadequate support. This supplemental support system has an ultimate capacity of 60,000lbs and is used where existing column supports have failed or settled.

ECP products are "Designed and Engineered to Perform".



Advantages:

- Quick to Install
- Positive Support System
- Economical
- Easily used in conjunction with crawlspace encapsulation
- Zinc Corrosion Protected
- 60,000 lb Ultimate Capacity



**EARTH
CONTACT
PRODUCTS**

1-866-327-0007

15612 S Keeler Terr.
Olathe, KS 66062
Phone: 913-393-0007
Fax: 913-393-0008
info@getecp.com
www.getecp.com