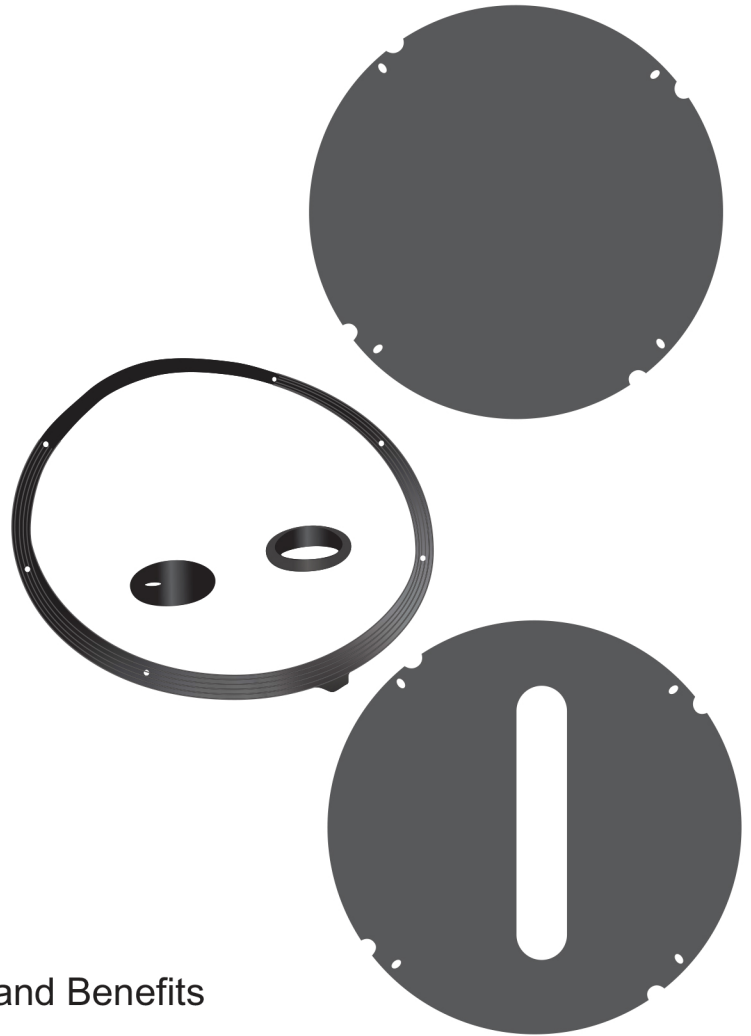
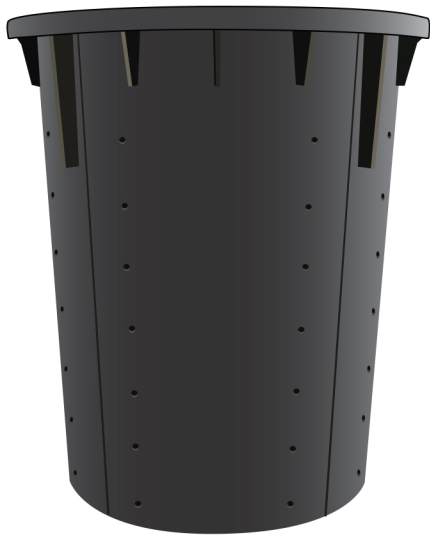


The ECP SPP-22 is ideal for basement applications where a submersible or pedestal sump pump is required. The single piece basin is injection molded structural foam polyethylene and provides superior structural toughness and reliability. The strong reinforced bottom will not buckle, deform or puncture, even under the harshest soil or ground water conditions. The SPP-22 will provide decades of reliable service.



### Features and Benefits

- 20 U.S. gallon capacity
- Heavy duty structural foam injection molded construction
- Ultra strong, reinforced bottom will not flex
- Cover mounting metal inserts included on basin
- Gas and radon tight
- Odor free
- Perforated with 48 factory drilled, 5/16" holes
- Solid or slotted lid options
- Can be made into a fully sealed system

### Specifications

- Material: Injection molded structural foam polyethylene
- Inserts: Metal
- Weight: 11 lbs.
- Total Capacity: 20 gallons
- 18" X 22"

**1-866-327-0007**

15612 S Keeler Terr.  
Olathe, KS 66062  
Phone: 913-393-0007  
Fax: 913-393-0008  
info@getecp.com  
www.getecp.com

