

ECP Crawl Space Vapor Barrier

ECP Vapor Barriers Prevent

- water vapor migration
- radon and methane gas
- mold, mildew and fungus
- wood rot
- heat loss (via damp insulation)
- allergens
- water damage



ECP's crawl space vapor barriers are a high performance crawl space vapor barrier designed to prevent moisture from entering the crawl space. The ECP 12 mil and 20 mil vapor barriers guard against mold, mildew, allergens, fungus, radon gas, methane gas, heat loss due to damp insulation, wood rot, and overall degradation of the crawl space. ECP's CVB-12 is a white, triple-ply polyethylene film laminated together. A heavy scrim reinforcement placed between these plies greatly enhances tear resistance and increases service life. ECP's CVB 20 consists of white high strength virgin polyethylene film laminated together with a black layer of molten polyethylene. Both outer layers contain UV inhibitors and thermal stabilizers to assure longer life while reducing head build up and condensation. Heavy duty diamond reinforcements respond to tears immediately by surrounding and stopping the tear.

Advantages Include:

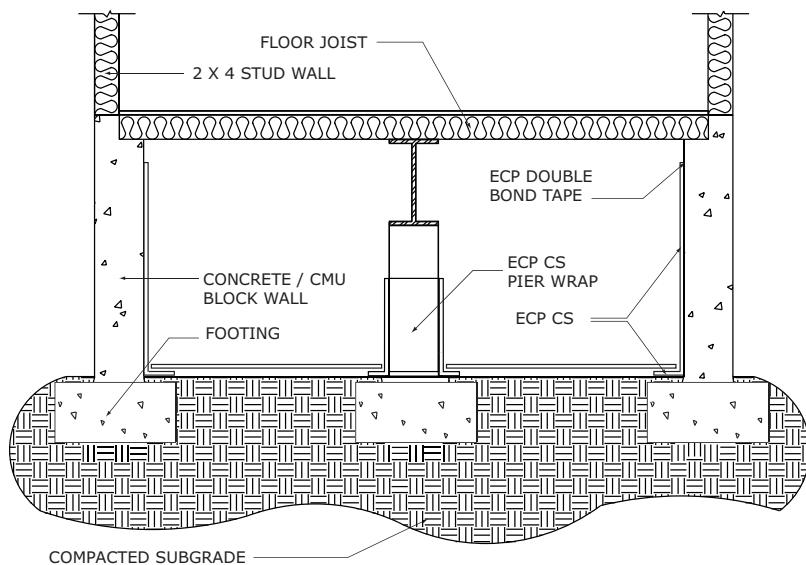
- Superior Puncture and Tear Resistance
- Provides a Bright, Clean, Healthy Crawl Space
- Ensures an Effective Seal Against Pressure Driven Moisture
- Transforms Crawl Space Into a Usable Space
- Effective as a Radon and Methane Gas Barrier
- Exceeds All ASTM E 1745 Class A, B and C Requirements

Creating a healthy home starts from the ground up. Crawl spaces are full of moisture and without a proper vapor barrier the moisture has nowhere to go but up. Without complete protection your living space and contents are in jeopardy. By installing ECP's CVB 12 or CVB 20, you can rest assured that you are using the best crawl space protection available.

**EARTH
CONTACT
PRODUCTS**
1-866-327-0007

15612 S Keeler Terr.
Olathe, Ks 66062
Phone: 913-393-0007
Fax: 913-393-0008
info@getecp.com
www.getecp.com

Properties	Test Method	ECP CVB20	ECP CVB 12
Appearance		white/white	white/black
Thickness, Nominal		20 mil	12 mil
Weight		14 oz./yd ²	7.9 oz./yd ²
Construction		Four -Layer Reinforced Extrusion Laminate	Four -Layer Reinforced Extrusion Laminate
1" Tensil Strength	ASTM D7003	90 lbf/in	76 lbf/in
Tensile Elongation at Scrim Break	ASTM D7003	16%	14%
Tensile Elongation at Film Break	ASTM D7003	760%	578%
Grab Tensile	ASTM D7004	140 lbf	100 lbf
CBR Puncture Resistance	ASTM D6241	340 lbf	276 lbf
Tongue Tear	ASTM D5884	63 lbf	54 lbf
Trapezoid Tear	ASTM D4533	85 lbf	59 lbf
Mullen Burst	ASTM D751	170 psi	107 psi
Max Use Temp		180° F	180° F
Min Use Temp		-70° F	-70° F
WVTR	ASTM E96 Procedure B	0.130 grains/(100in ² -day)	0.023 grains/(100in ² -day)
Perm Rating	ASTM E96 Procedure B	0.130 grains/(100in ² -day)	0.51 grains/(100in ² -day)



EARTH CONTACT PRODUCTS

1-866-327-0007

15612 S Keeler Terr.

Olathe, Ks 66062

Phone: 913-393-0007

Fax: 913-393-0008

info@getecp.com

www.getecp.com